



White Hill Wind Farm Electricity
Substation & Electricity Line

Environmental Impact Assessment Report

Annex 5.1: Figures

White Hill Wind Limited

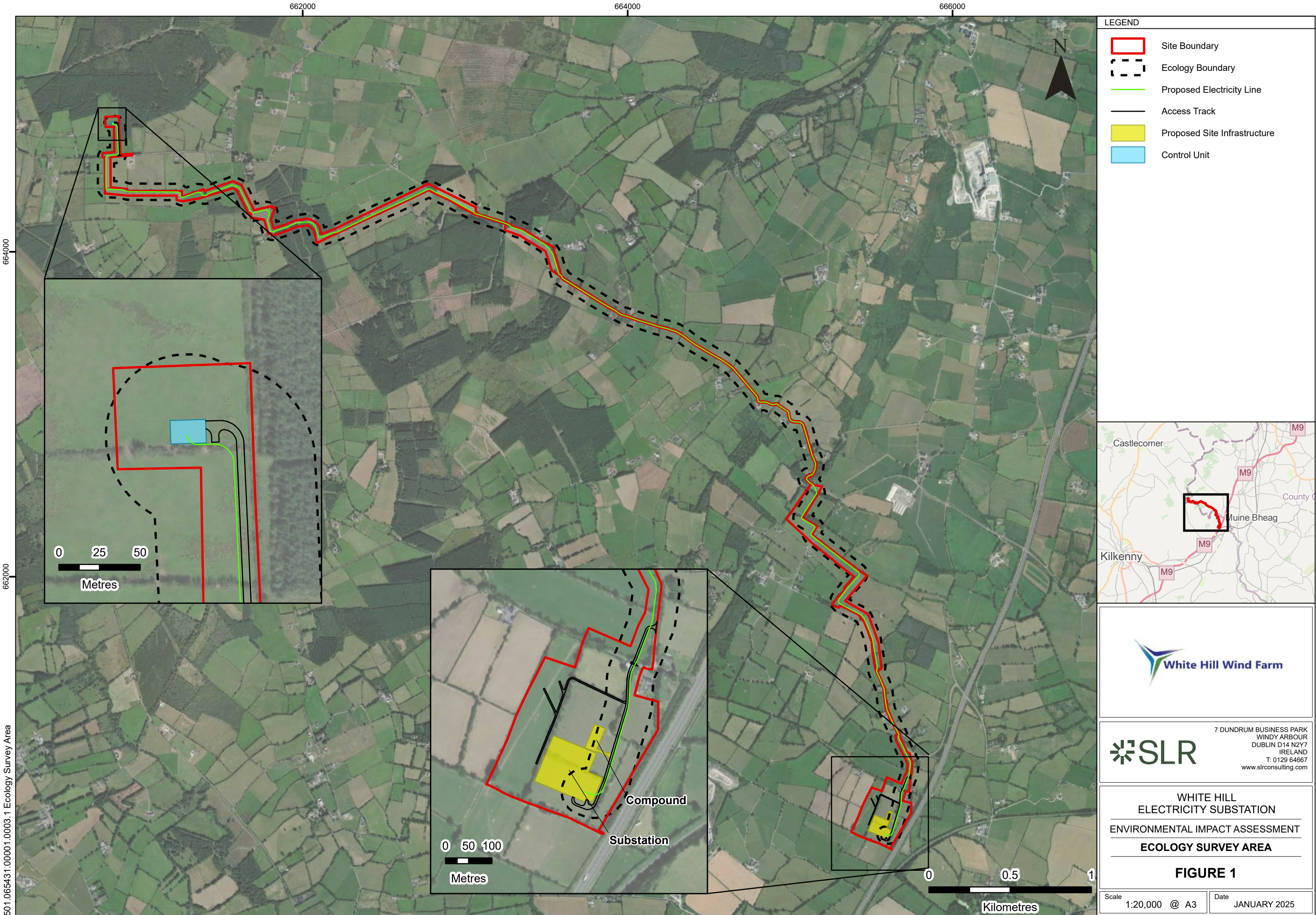
Galetech Energy Services

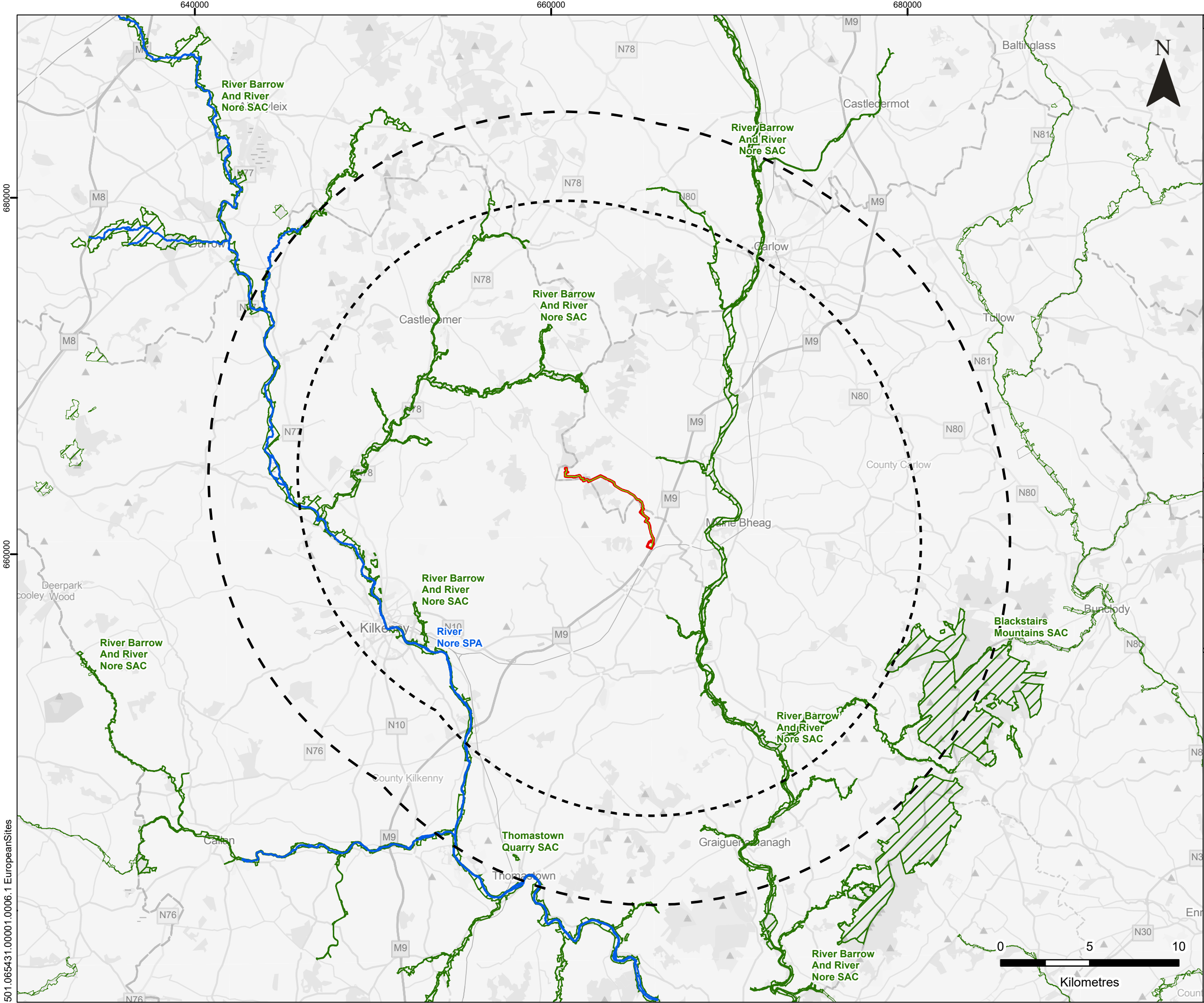
Clondargan, Stradone, Co. Cavan Ireland

Telephone +353 (0)49 555 5050

www.galetechenergyservices.com







LEGEND

- Site Boundary
- Site Boundary 15 km Buffer
- Site Boundary 20 km Buffer
- Proposed Electricity Line

Designations

- Special Area of Conservation (SAC)
- Special Protected Area (SPA)

7 DUNDRUM BUSINESS PARK
WINDY ARBOUR
DUBLIN D14 N2Y7
IRELAND
T: 0129 64667
www.slrconsulting.com

SLR

**WHITE HILL
ELECTRICITY SUBSTATION
ENVIRONMENTAL IMPACT ASSESSMENT**

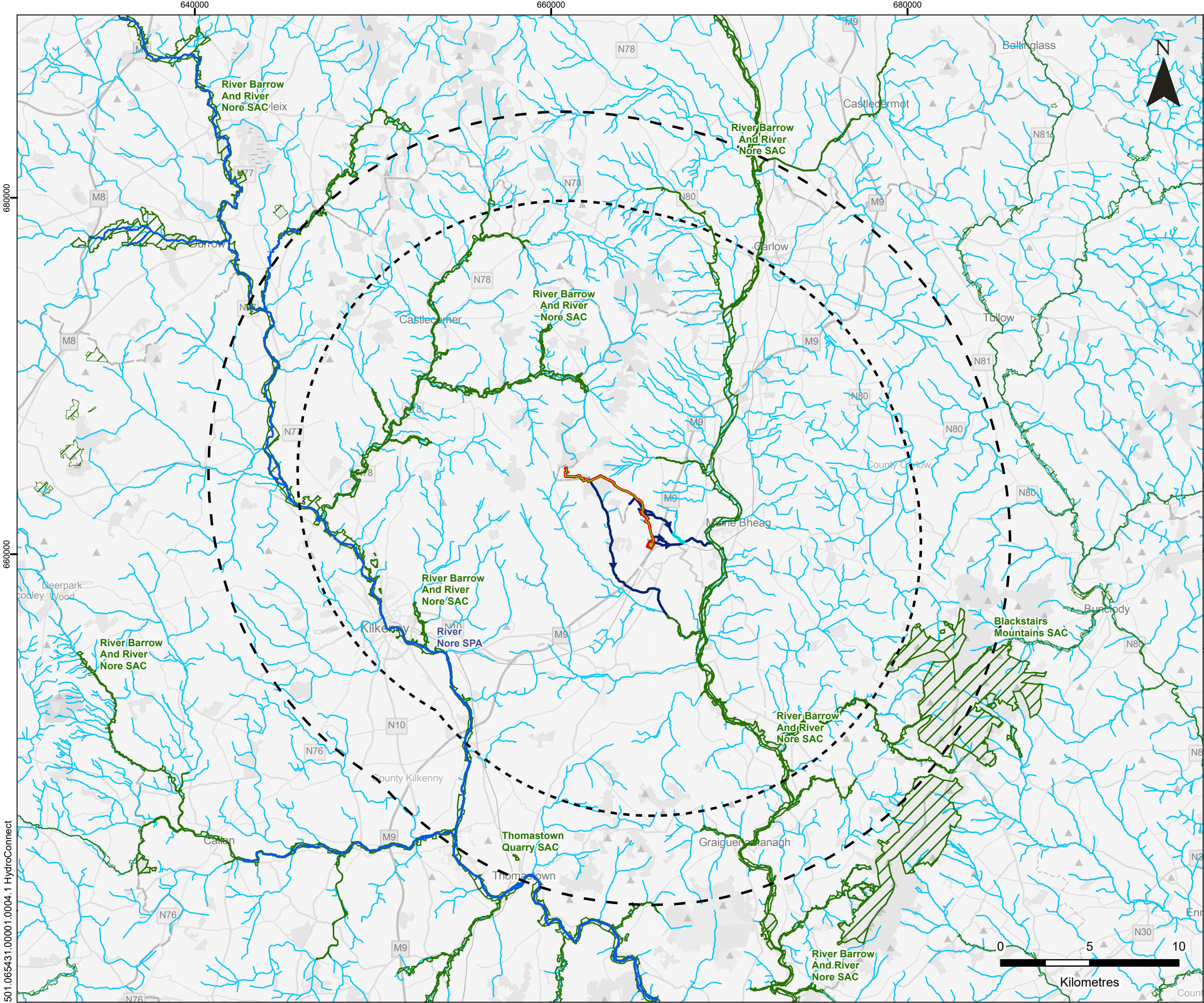
**EUROPEAN SITES WITHIN
15 KM AND 20 KM**

FIGURE 2A

Scale 1:200,000 @ A3

Date JANUARY 2025

501.065431.00001.0006.1 European Sites



LEGEND

- Site Boundary
- Site Boundary 15 km Buffer
- Site Boundary 20 km Buffer
- Proposed Electricity Line

Designations

- Special Area of Conservation (SAC)
- Special Protected Area (SPA)

Potential Hydrological Connectivity

- Downstream Hydrological Connection
- Other Watercourse



SLR

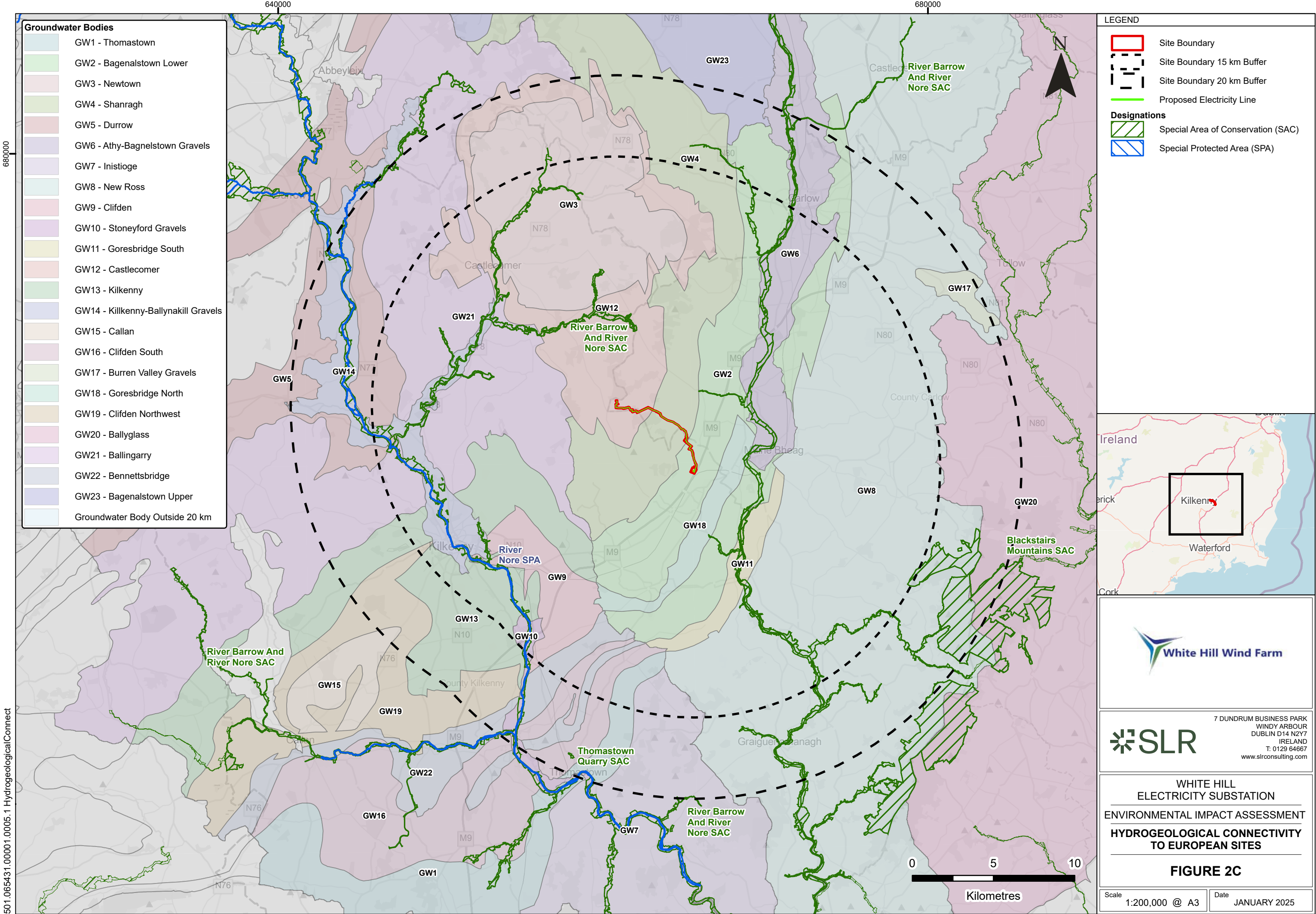
7 DUNDUM BUSINESS PARK
WINDY ARBOUR
DUBLIN D14 N2Y7
IRELAND
T: 0129 64667
www.slrconsulting.com

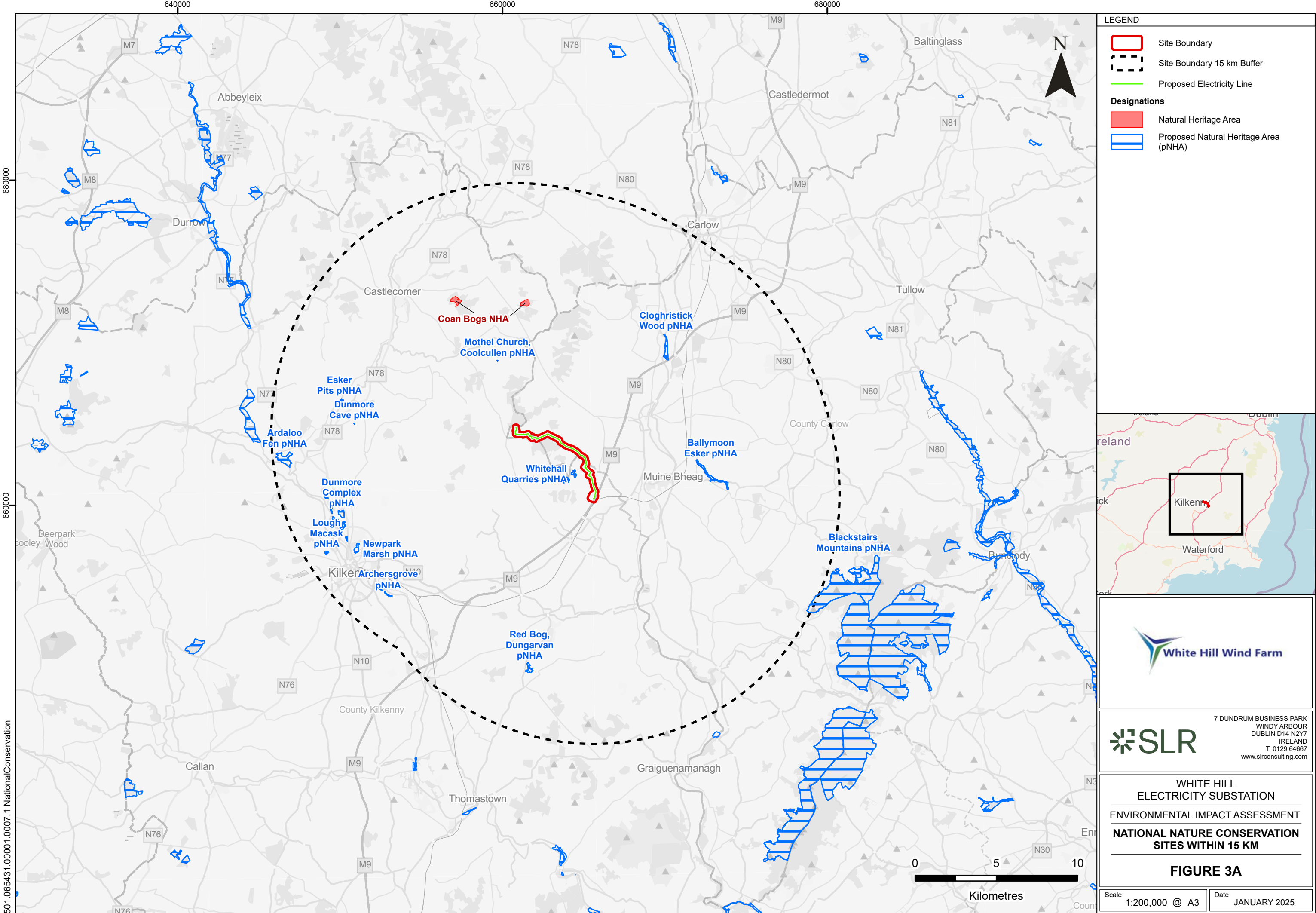
**WHITE HILL
ELECTRICITY SUBSTATION
ENVIRONMENTAL IMPACT ASSESSMENT
HYDROLOGICAL CONNECTIVITY TO
EUROPEAN SITES**

FIGURE 2B

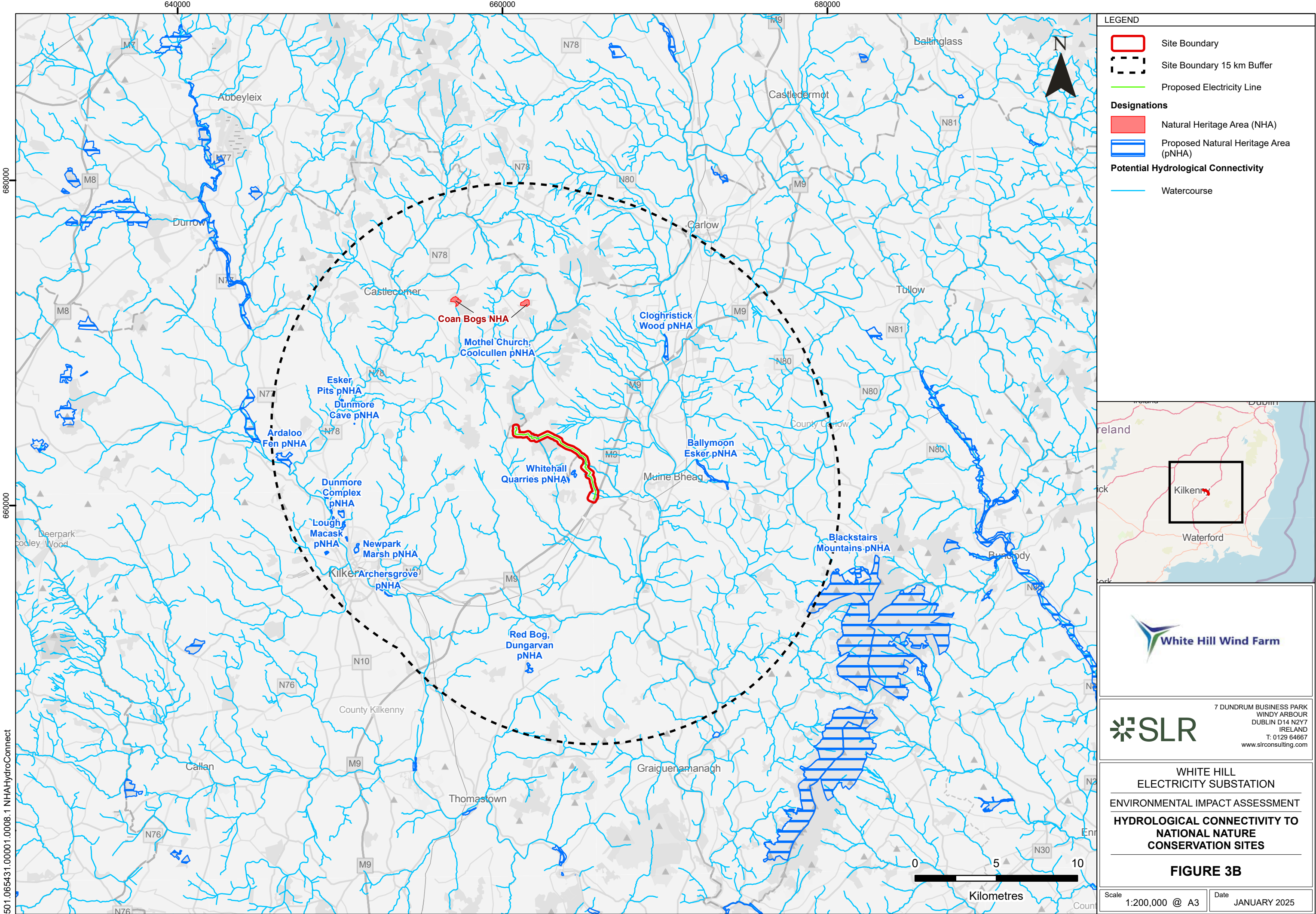
Scale 1:200,000 @ A3 Date JANUARY 2025

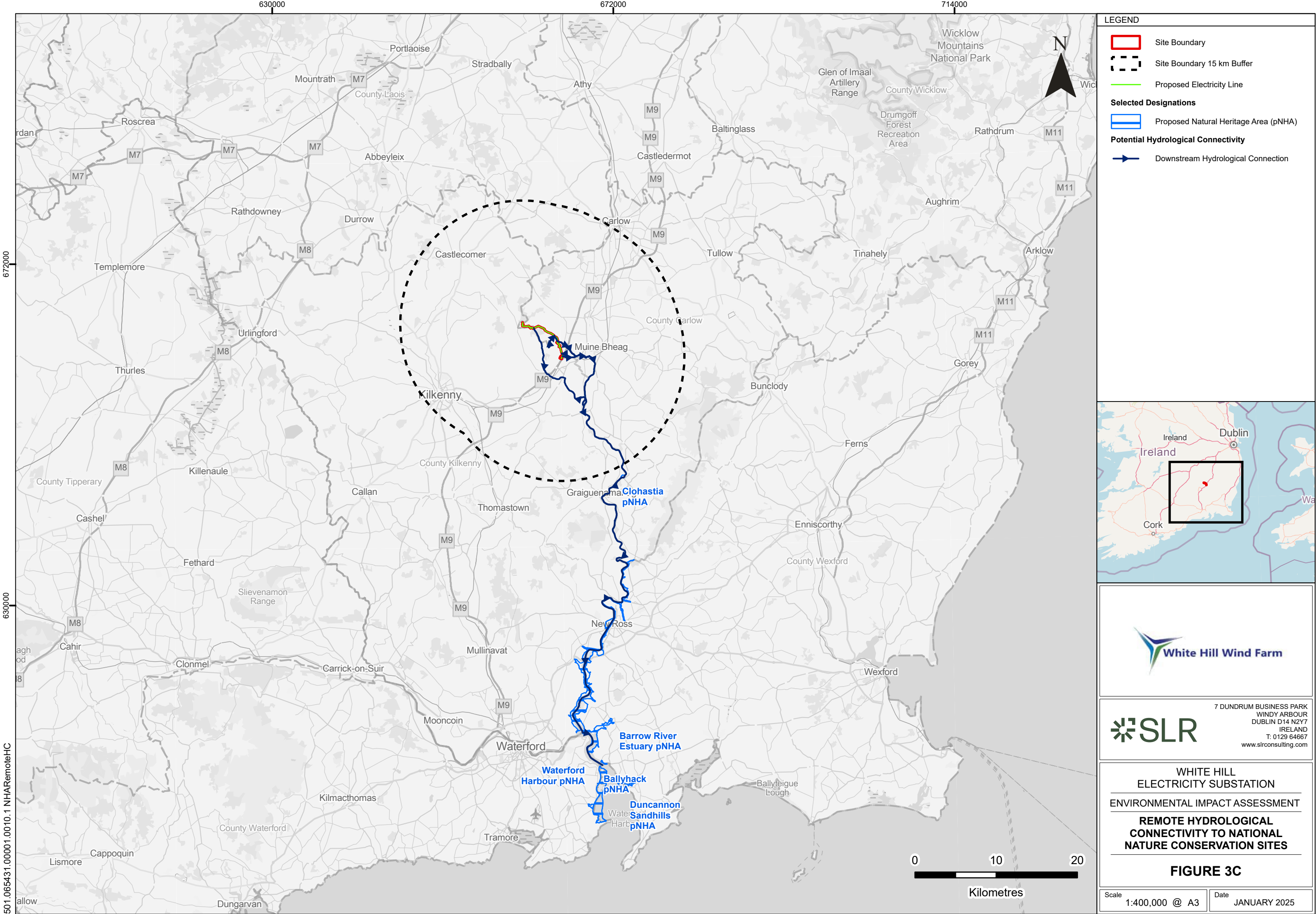
501.065431.00001.0004.1 HydroConnect



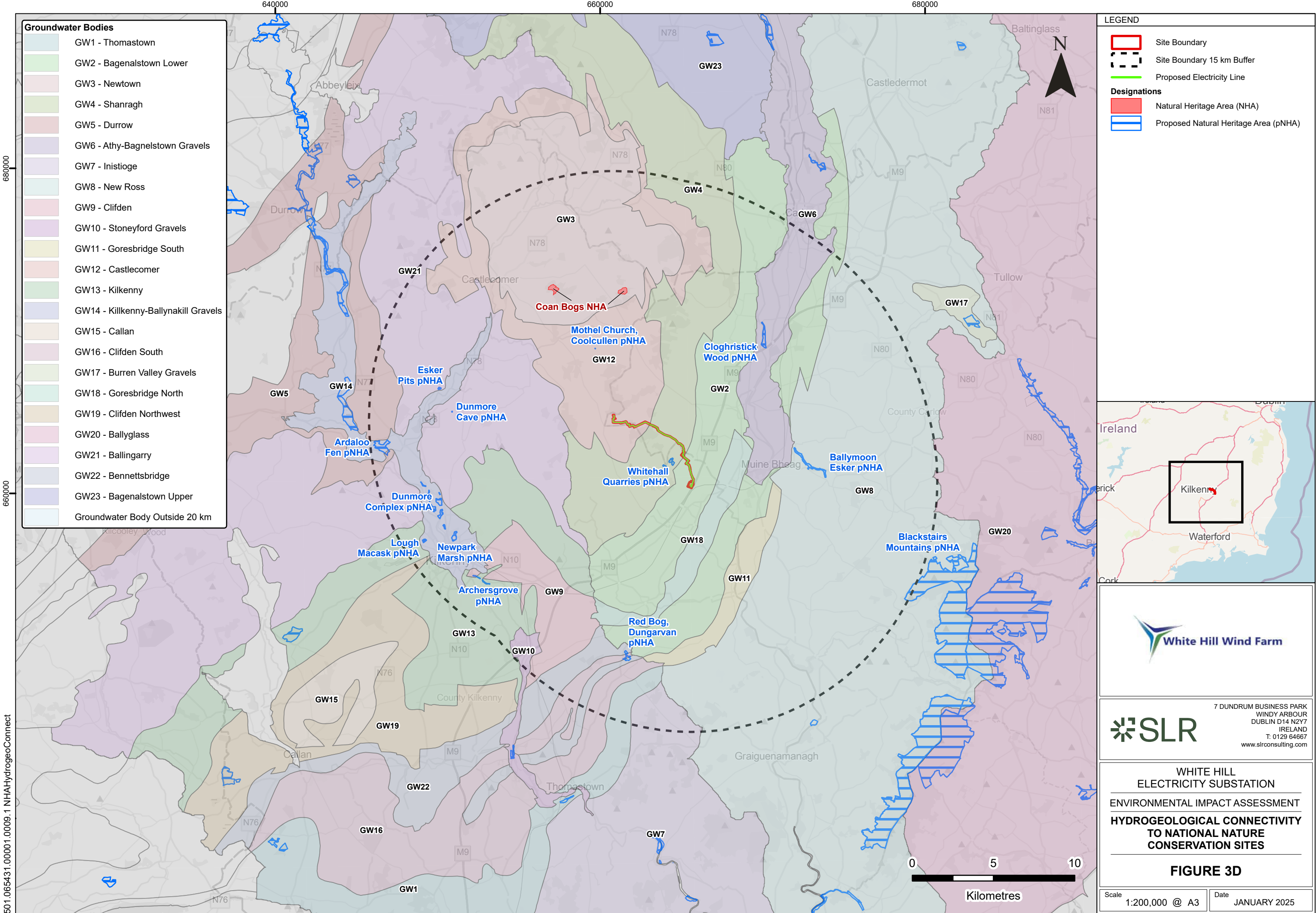


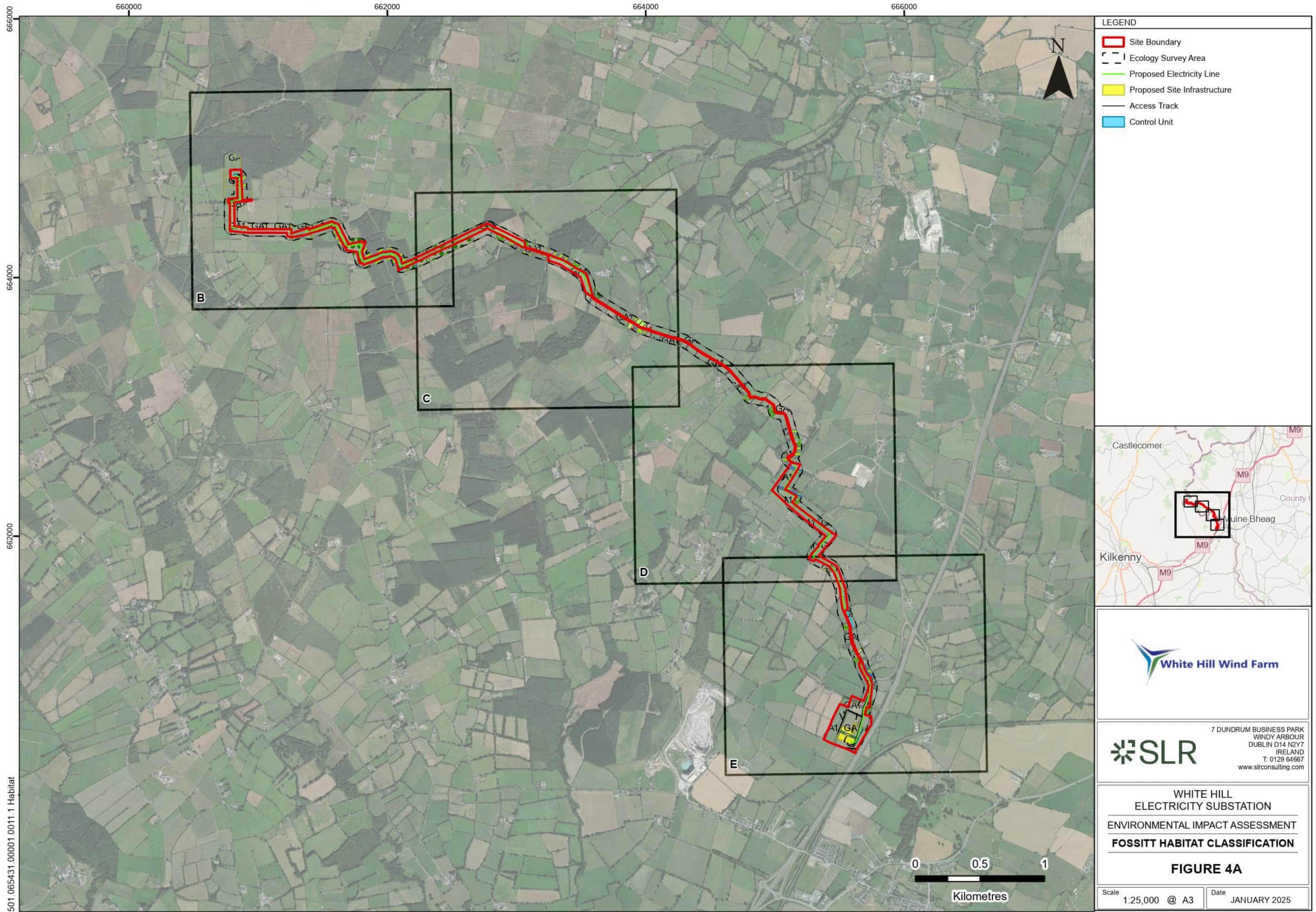
501.065431,00001,0007,1 NationalConservation



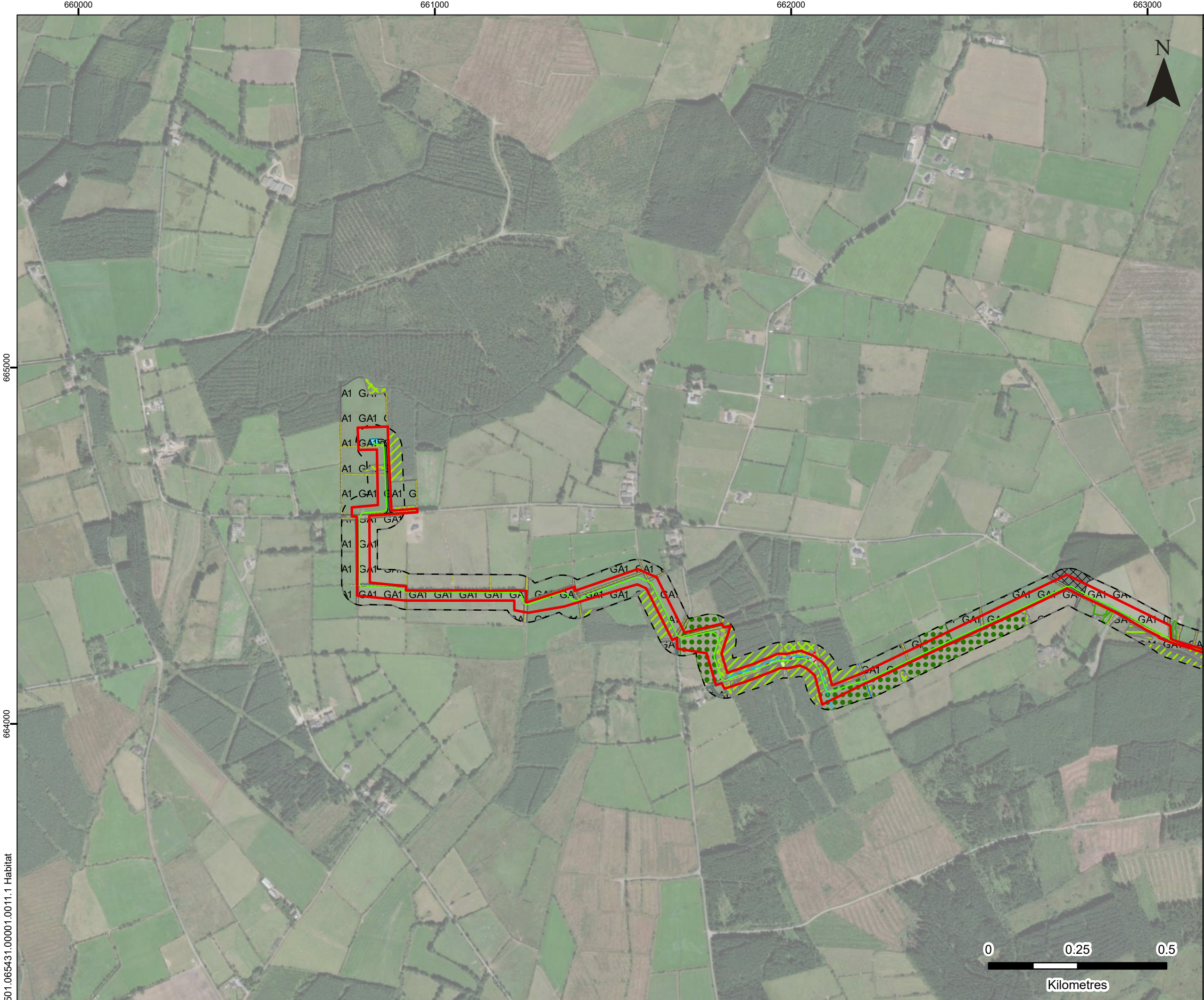


501.065431.00001.0010.1 NHARemoteHC





501_065431.00001.0011.1 Habitat



LEGEND

Site Boundary

Ecology Survey Area

Proposed Electricity Line

Access Track

Control Unit

Habitats of Interest (Fossitt Code)

BL3 - Buildings and Artificial Surfaces

FW1 - Eroding/Upland River

FW4 - Drainage Ditch

FW4/ WL1 - Drainage Ditch/Hedgerow

WL1 - Hedgerow

WL2 - Treeline

BL3 - Buildings and Artificial Surfaces

ED2 - Spoil and Bare Ground

ED3 - Recolonising Bare Ground

GA1 - Improved Agricultural Grassland

GA2 - Amenity Grassland (Improved)

GS4 - Wet Grassland

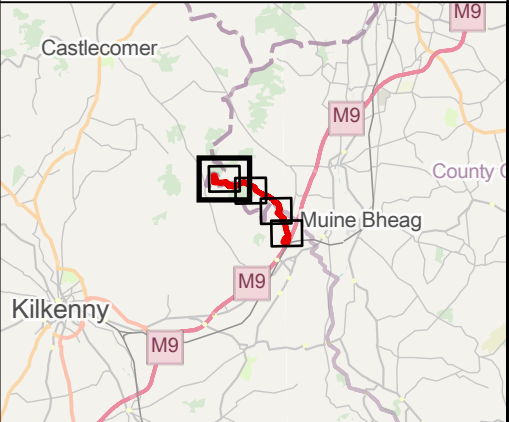
GS4/ WS1 - Wet Grassland/ Scrub

WD1 - Mixed Broadleaved Woodland

WD4 - Conifer Plantation

WS1 - Scrub

WS5 - Recently Felled Woodland





7 DUNDUM BUSINESS PARK
WINDY ARBOUR
DUBLIN D14 N2Y7
IRELAND
T: 0129 64667
www.slrconsulting.com



**WHITE HILL
ELECTRICITY SUBSTATION**

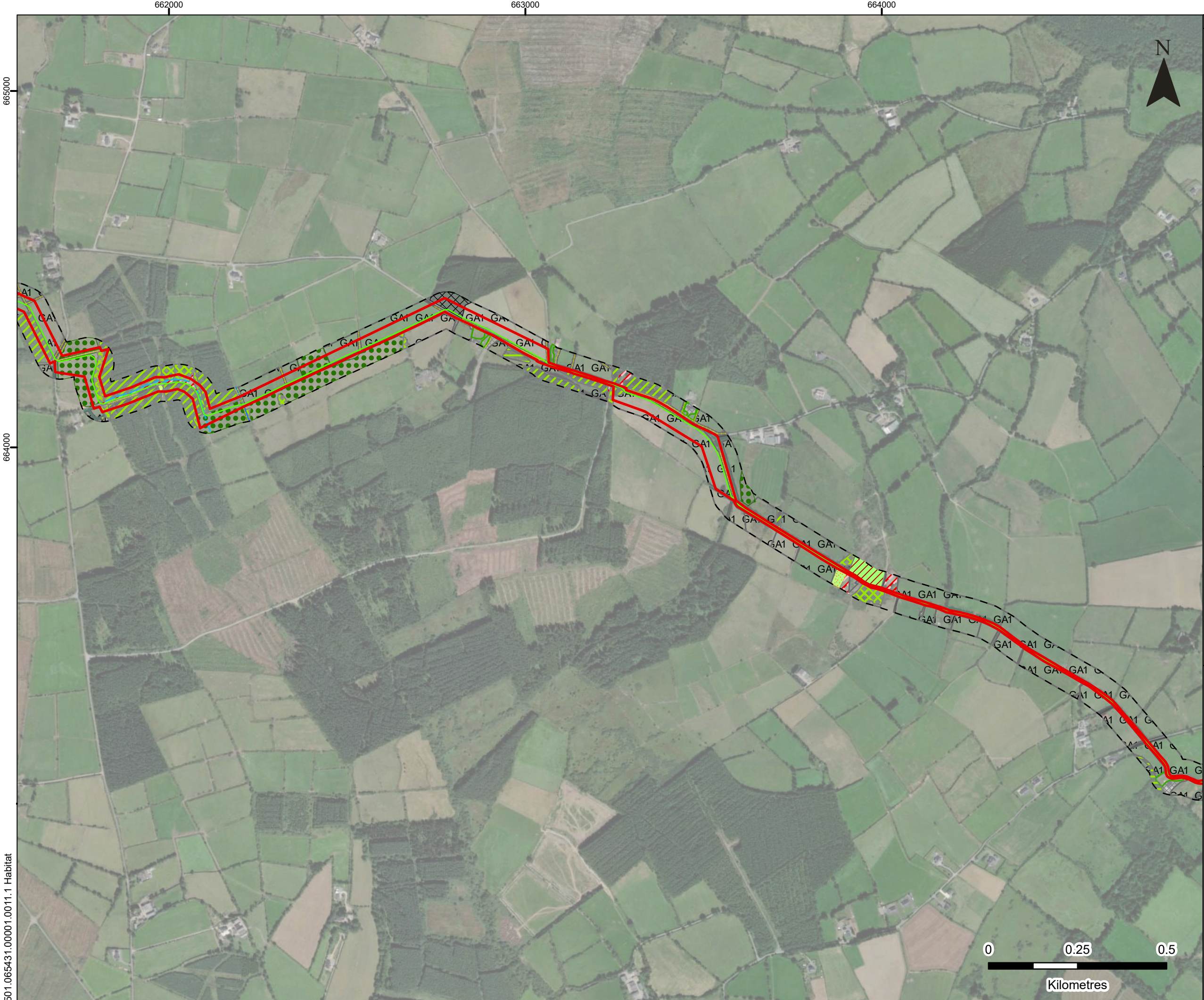
ENVIRONMENTAL IMPACT ASSESSMENT

FOSSITT HABITAT CLASSIFICATION

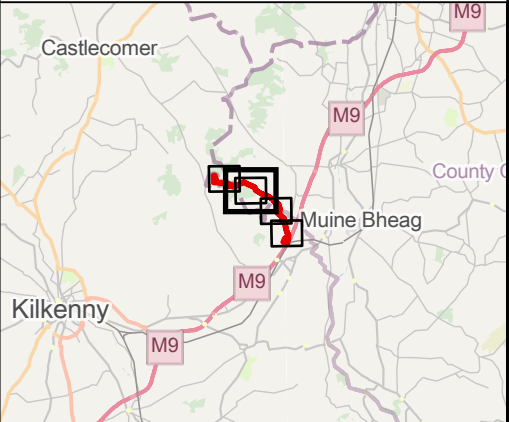
FIGURE 4B

Scale
1:10,000 @ A3

Date
JANUARY 2025



| LEGEND | |
|--|--|
| Site Boundary | ED2 - Spoil and Bare Ground |
| Ecology Survey Area | ED3 - Recolonising Bare Ground |
| Proposed Electricity Line | ED2/ED3/WS1 - Spoil and Bare Ground/Recolonising Bare Ground/Scrub |
| Habitats of Interest (Fossitt Code) | |
| Fossitt | |
| BL1 - Stone Walls and Other Stonework | FL8 - Other Artificial Lakes and Ponds |
| BL3 - Buildings and Artificial Surfaces | GA1 - Improved Agricultural Grassland |
| FW1 - Eroding/Upland River | GA2 - Amenity Grassland (Improved) |
| FW4 - Drainage Ditch | GS4 - Wet Grassland |
| FW4/ WL1 - Drainage Ditch/Hedgerow | GS4/ WS1 - Wet Grassland/ Scrub |
| WL1 - Hedgerow | WD1 - Mixed Broadleaved Woodland |
| WL2 - Treeline | WD4 - Conifer Plantation |
| BL2 - Earth Banks | WS1 - Scrub |
| BL3 - Buildings and Artificial Surfaces | WS5 - Recently Felled Woodland |



7 DUNDRUM BUSINESS PARK
WINDY ARBOUR
DUBLIN D14 N2Y7
IRELAND
T: 0129 64667
www.slrconsulting.com

WHITE HILL
ELECTRICITY SUBSTATION
ENVIRONMENTAL IMPACT ASSESSMENT
FOSSITT HABITAT CLASSIFICATION

FIGURE 4C

| | |
|------------------------|----------------------|
| Scale 1:10,000 @ A3 | Date JANUARY 2025 |
|------------------------|----------------------|

501.065431.00001.0011.1 Habitat



LEGEND

Site Boundary

Ecology Survey Area

Proposed Electricity Line

Habitats of Interest (Fossitt Code)

BL1 - Stone Walls and Other Stonework

BL3 - Buildings and Artificial Surfaces

ED3 - Recolonising Bare Ground

FW1 - Eroding/Upland River

FW4 - Drainage Ditch

WL1/ WL2 - Hedgerow/Treeline

WL1 - Hedgerow

WL2 - Treeline

BL2 - Earth Banks

BL3 - Buildings and Artificial Surfaces

ED3 - Recolonising Bare Ground

ED2/ED3/WS1 - Spoil and Bare Ground/ Recolonising Bare Ground/Scrub

FL8 - Other Artificial Lakes and Ponds

GA1 - Improved Agricultural Grassland

GA2 - Amenity Grassland (Improved)


GS4 - Wet Grassland


WD1 - Mixed Broadleaved Woodland

WD4 - Conifer Plantation

WS1 - Scrub

WD5 - Scattered Trees and Parkland





7 DUNDUM BUSINESS PARK
WINDY ARBOUR
DUBLIN D14 N2Y7
IRELAND
T: 0129 64667
www.slrconsulting.com

WHITE HILL
ELECTRICITY SUBSTATION

ENVIRONMENTAL IMPACT ASSESSMENT

FOSSITT HABITAT CLASSIFICATION

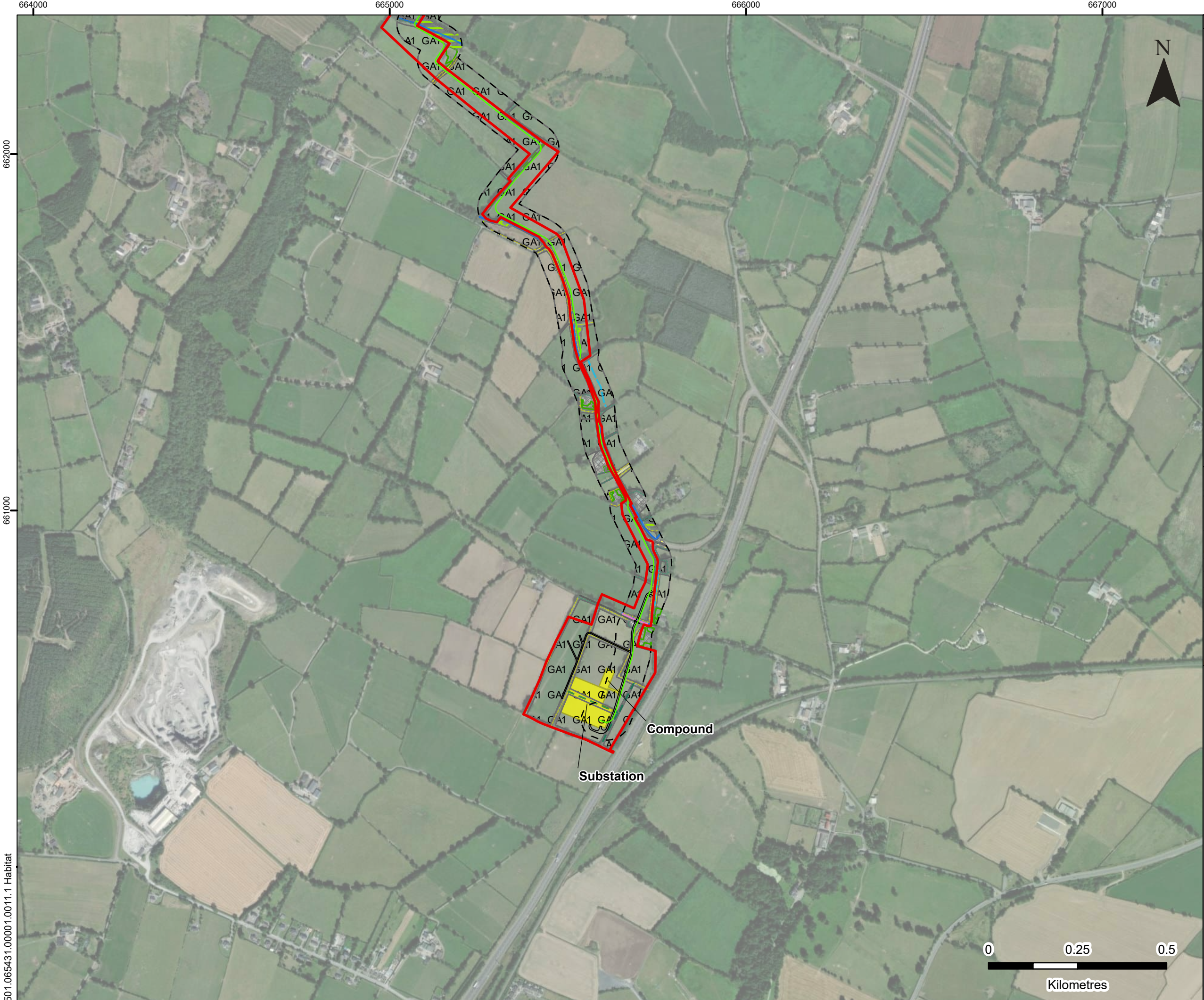
FIGURE 4D

Scale
1:10,000 @ A3

Date
JANUARY 2025

Aerial Imagery (2024) Source: World Imagery: Maxar, Microsoft
OpenStreetMap: Map data © OpenStreetMap contributors, Microsoft, Facebook, Inc. and its affiliates, Esri Community Maps contributors, Map layer by Esri

© This drawing and its content are the copyright of SLR Environmental Consulting (Ireland) Ltd and may not be reproduced or amended except by prior written permission.
SLR Environmental Consulting (Ireland) Ltd accepts no liability for any amendments made by other persons.



LEGEND

Site Boundary

Ecology Survey Area

Proposed Electricity Line

Proposed Site Infrastructure

Access Track

FW4/ WL2 - Drainage Ditch/ Treeline

GS2 - Dry Meadows and Grassy Verges

WL1/ WL2 - Hedgerow/Treeline

WL1 - Hedgerow

WL2 - Treeline

Habitats of Interest (Fossitt Code)

Fossitt

BL1 - Stone Walls and Other Stonework

BL3 - Buildings and Artificial Surfaces

ED3 - Recolonising Bare Ground

FW1 - Eroding/ Upland River

FW4 - Drainage Ditch

FW4/ WL1 - Drainage Ditch/ Hedgerow

BL3 - Buildings and Artificial Surfaces

GA1 - Improved Agricultural Grassland

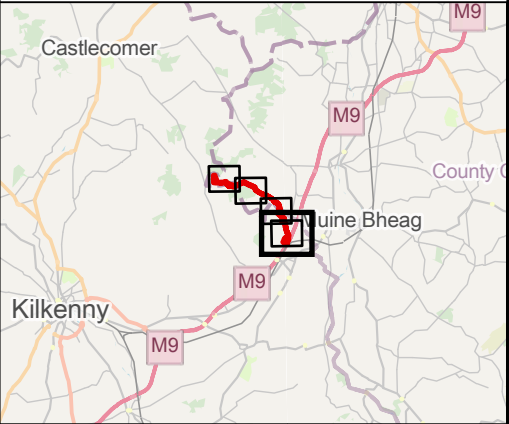
GS2 - Dry Meadows & Grassy Verges

GA2 - Amenity Grassland (Improved)

WD1 - Mixed Broadleaved Woodland

WS1 - Scrub

WD5 - Scattered Trees and Parkland



SLR

7 DUNDUM BUSINESS PARK
WINDY ARBOUR
DUBLIN D14 N2Y7
IRELAND
T: 0129 64667
www.slrconsulting.com

WHITE HILL
ELECTRICITY SUBSTATION

ENVIRONMENTAL IMPACT ASSESSMENT

FOSSITT HABITAT CLASSIFICATION

FIGURE 4E

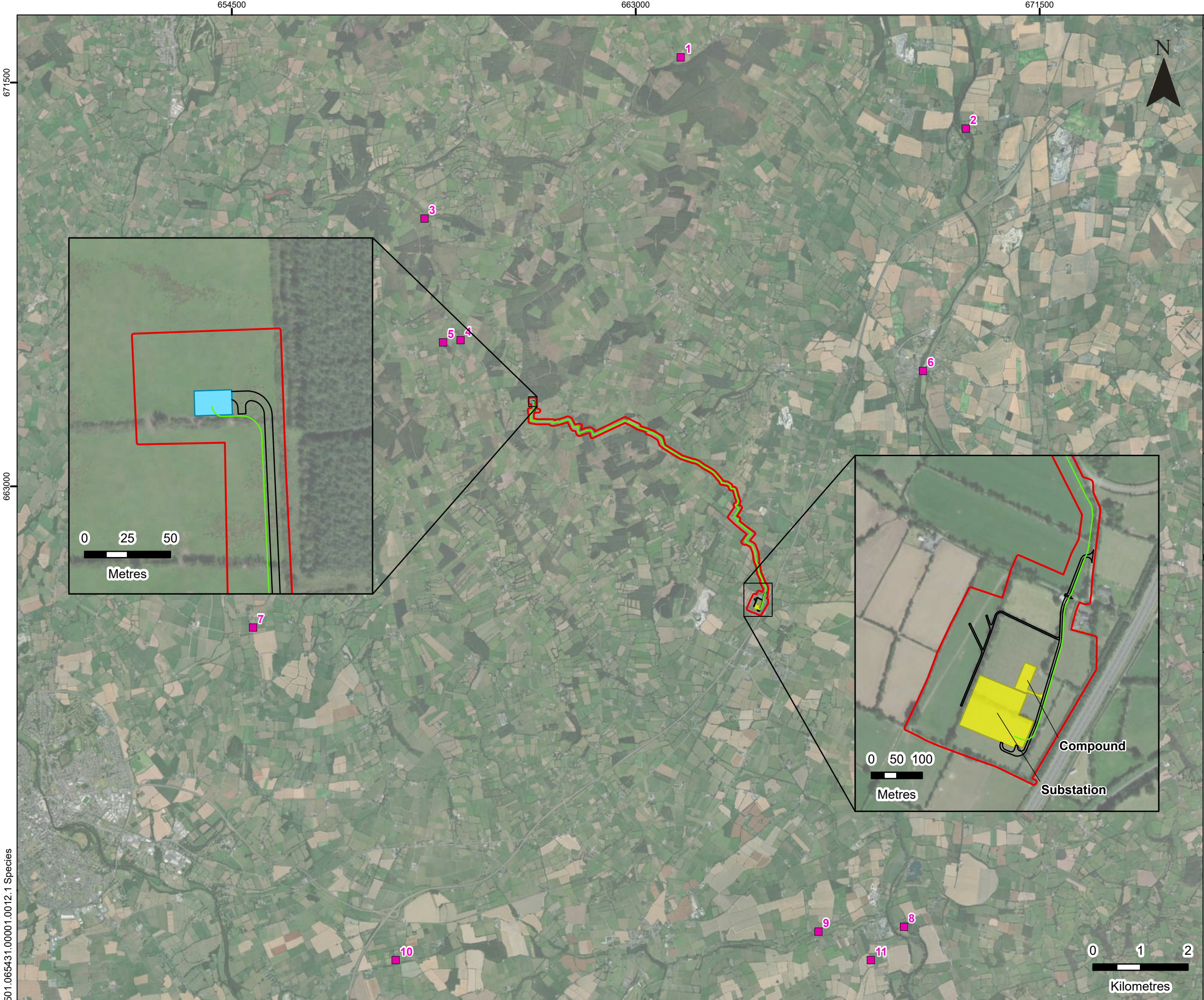
Scale

1:10,000 @ A3

Date

JANUARY 2025

501.065431.00001.0011.1 Habitat

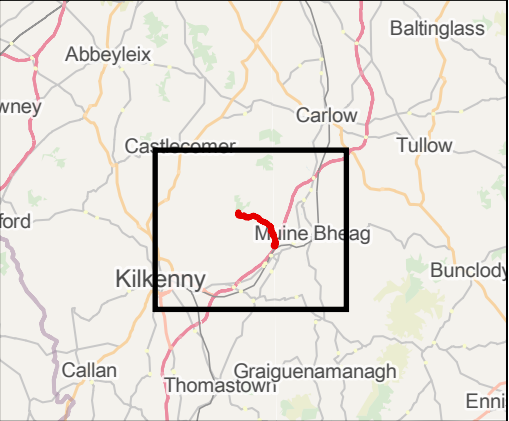


LEGEND

Site Boundary

Proposed Electricity Line

Species Record



7 DUNDRUM BUSINESS PARK
WINDY ARBOUR
DUBLIN D14 N2Y7
IRELAND
T: 0129 64667
www.slrconsulting.com

WHITE HILL
ELECTRICITY SUBSTATION

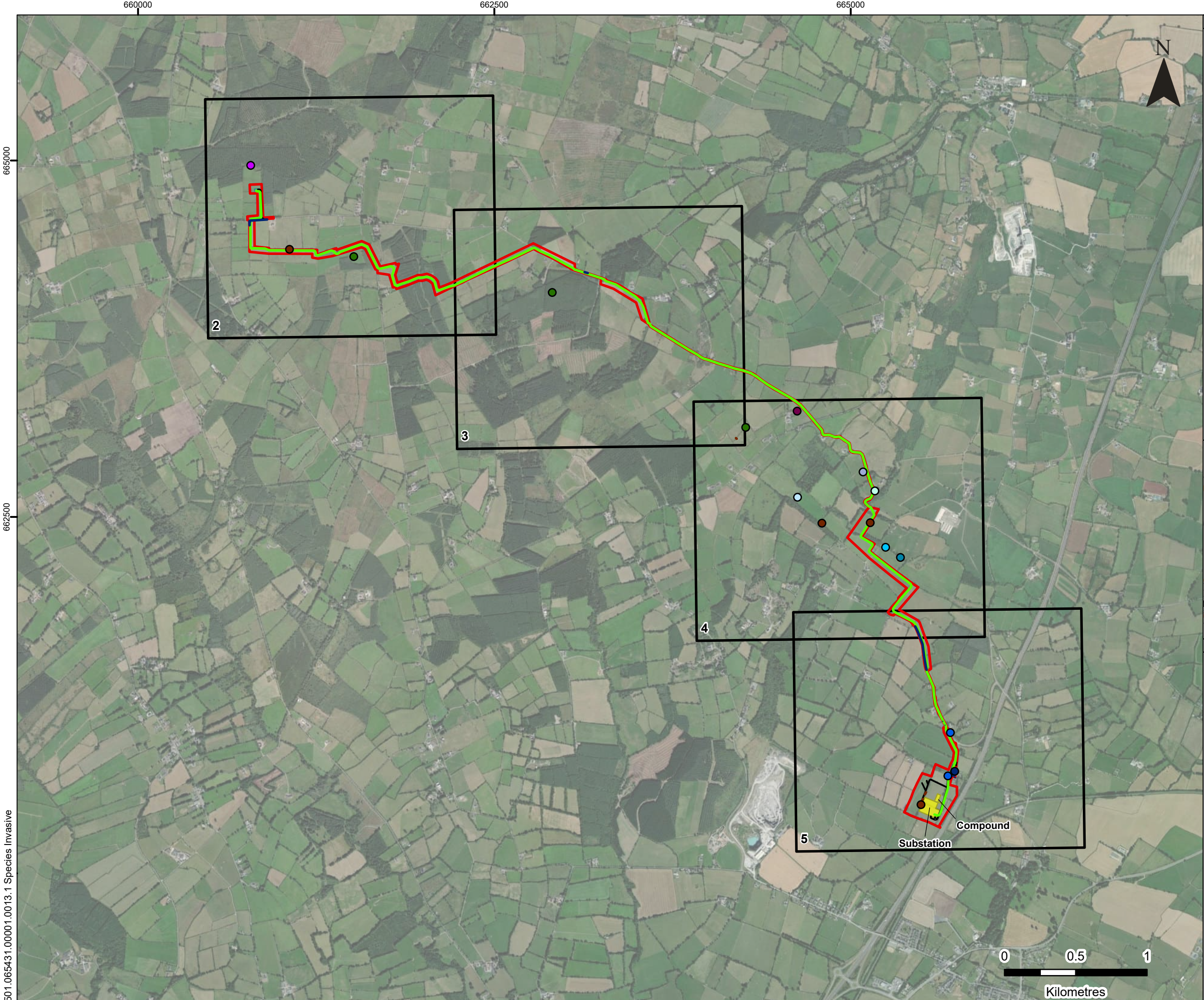
ENVIRONMENTAL IMPACT ASSESSMENT

SPECIES RECORD
- BAT

FIGURE 5A

Scale 1:75,000 @ A3

Date JANUARY 2025



LEGEND

Site Boundary

Proposed Electricity Line

Proposed Site Infrastructure

Species Record

Amphibian

Bat PRF1

Bat PRF2

Bat PRF3

Bat PRF4

Bat PRF5

Bat PRF6

Bat PRF7

Bat PRF9

Bat PRF8

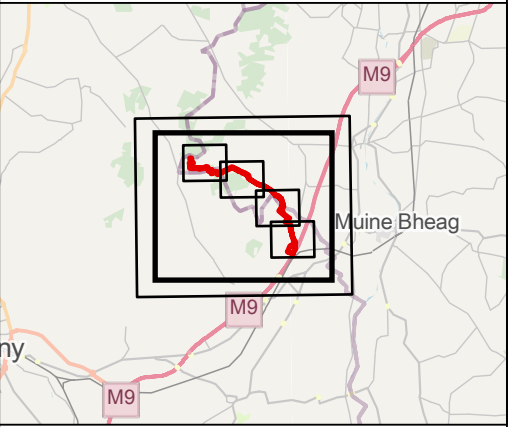
Bird

Mammal

Mammal

Invasive Plant

Invasive Plant



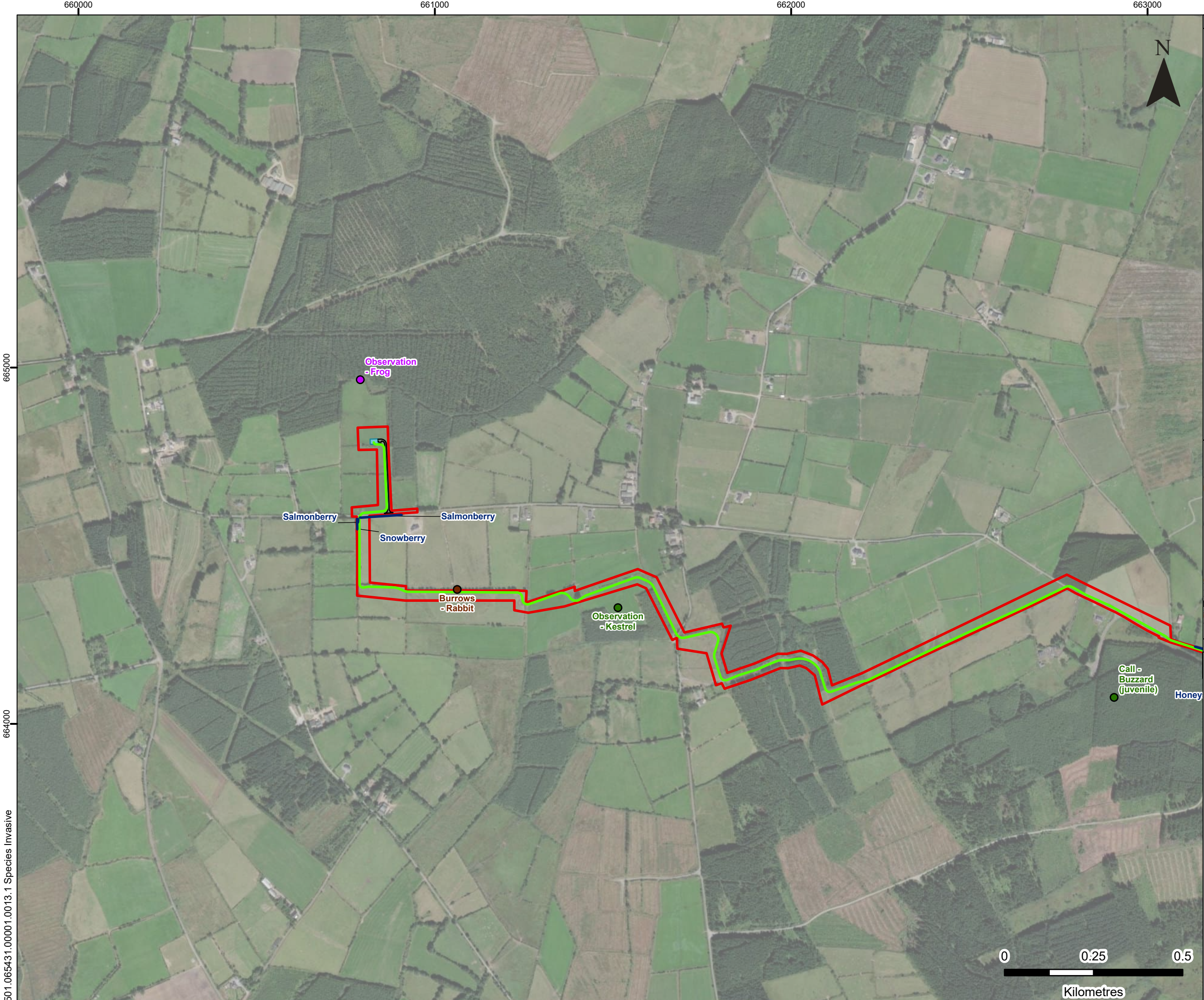
7 DUNDUM BUSINESS PARK
WINDY ARBOUR
DUBLIN D14 N2Y7
IRELAND
T: 0129 64667
www.slrconsulting.com

WHITE HILL
ELECTRICITY SUBSTATION
ENVIRONMENT IMPACT ASSESSMENT
SPECIES RECORD
- AMPHIBIAN, BIRD, MAMMAL
AND INVASIVE PLANT
FIGURE 5B. 1

Scale1:25,000 @ A3

DateJANUARY 2025

501.065431.00001.0013.1 Species Invasive



LEGEND

Site Boundary

Proposed Electricity Line

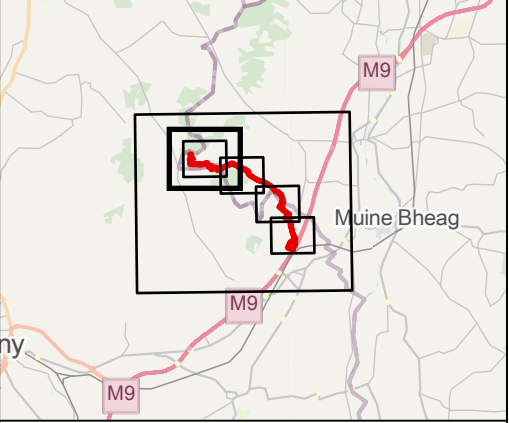
Species Record

● Amphibian

● Bird

● Mammal

— Invasive Plant



SLR

7 DUNDUM BUSINESS PARK
WINDY ARBOUR
DUBLIN D14 N2Y7
IRELAND
T: 0129 64667
www.slrconsulting.com

WHITE HILL
ELECTRICITY SUBSTATION
ENVIRONMENT IMPACT ASSESSMENT
**SPECIES RECORD
- AMPHIBIAN, BIRD, MAMMAL
AND INVASIVE PLANT**

FIGURE 5B. 2

Scale 1:10,000 @ A3 Date JANUARY 2025

501.065431.00001.0013.1 Species Invasive





LEGEND

Site Boundary

Proposed Electricity Line

Species Record

Bat PRF1

Bat PRF2

Bat PRF3

Bat PRF6

Bat PRF7

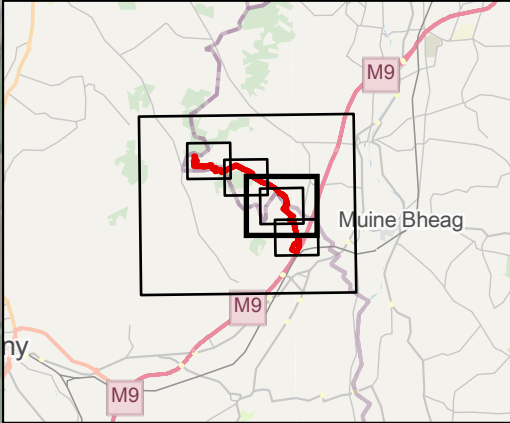
Bat PRF8

Bird

Mammal

Mammal

Invasive Plant

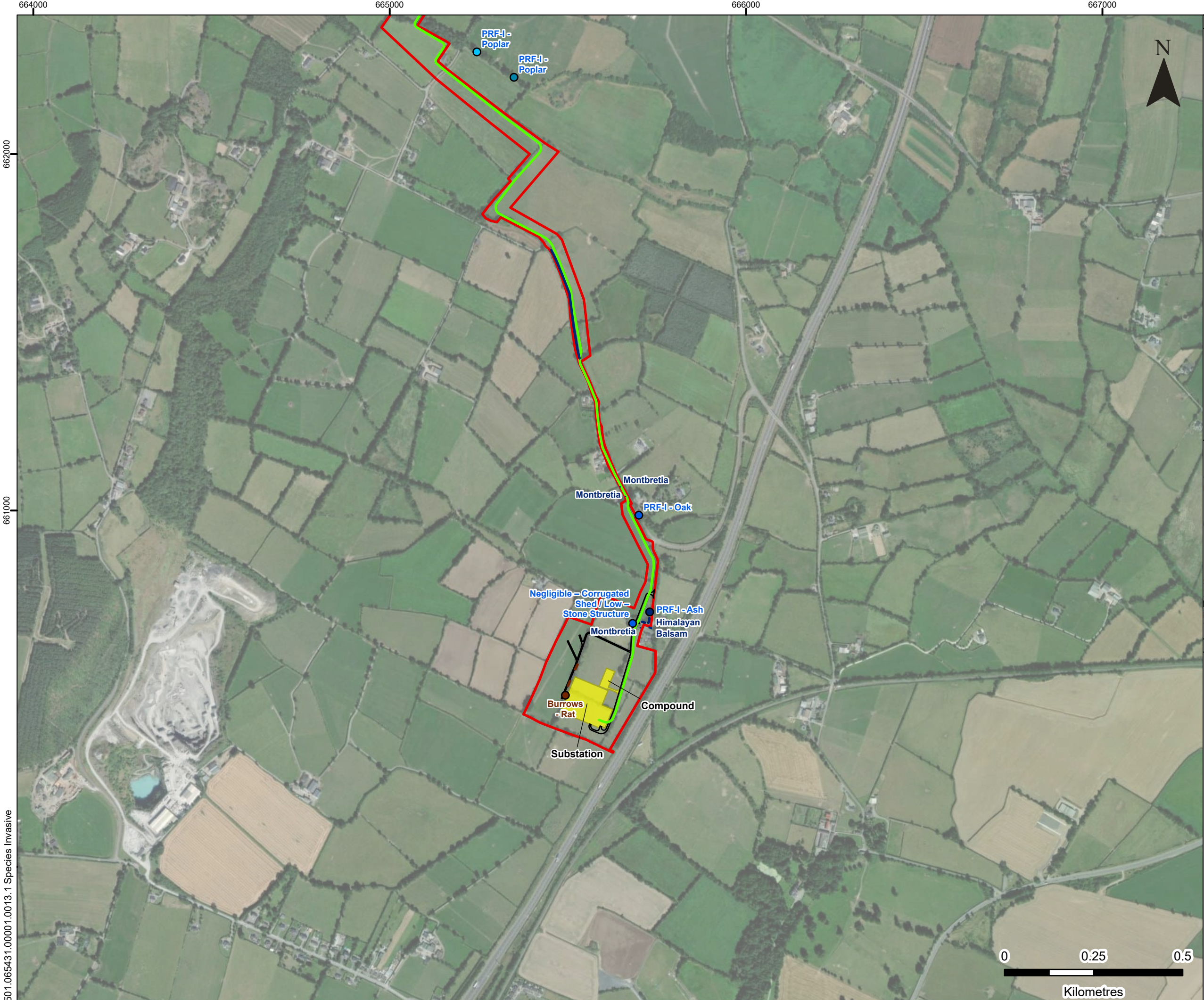


7 DUNDUM BUSINESS PARK
WINDY ARBOUR
DUBLIN D14 N2Y7
IRELAND
T: 0129 64667
www.slrconsulting.com

WHITE HILL
ELECTRICITY SUBSTATION
ENVIRONMENT IMPACT ASSESSMENT
SPECIES RECORD
- AMPHIBIAN, BIRD, MAMMAL
AND INVASIVE PLANT
FIGURE 5B. 4

Scale
1:10,000 @ A3

Date
JANUARY 2025

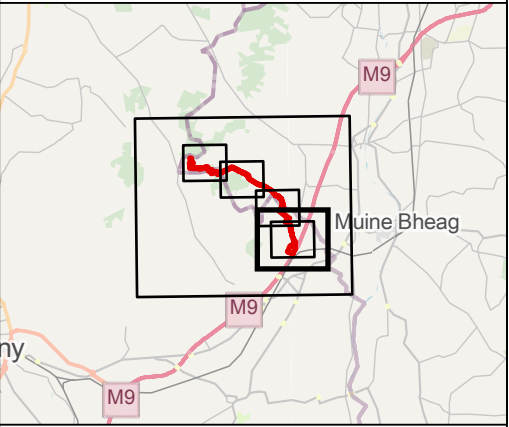


LEGEND

Site Boundary

Proposed Electricity Line

Species Record

Bat PRF2Bat PRF3Bat PRF4Bat PRF5Bat PRF9MammalMammalInvasive PlantInvasive Plant





7 DUNDUM BUSINESS PARK
WINDY ARBOUR
DUBLIN D14 N2Y7
IRELAND
T: 0129 64667
www.slrconsulting.com

WHITE HILL
ELECTRICITY SUBSTATION
ENVIRONMENT IMPACT ASSESSMENT

SPECIES RECORD
**- AMPHIBIAN, BIRD, MAMMAL
AND INVASIVE PLANT**

FIGURE 5B. 5

Scale
1:10,000 @ A3

Date
FEBRUARY 2025

501.065431.00001.0013.1 Species Invasive



LEGEND

Site Boundary

Proposed Site Infrastructure

Proposed Site Infrastructure

Species Management

Amphibian Hibernacula - Indicative Location

Bat Box - Indicative Location

Bird Box - Indicative Species

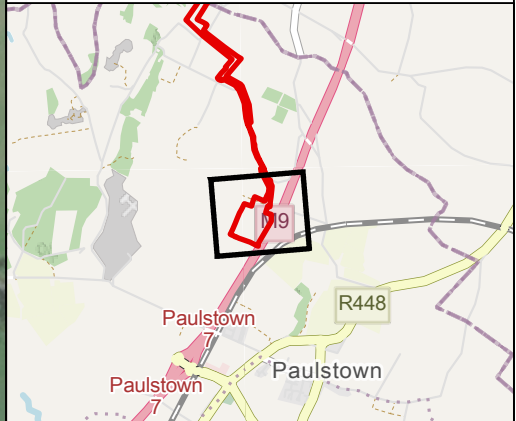
Insect Hotel - Indicative Location

Landscaping Management Measures

Retained / Bolstered Existing Hedgerow (Type 1)

Proposed Hedgerow (Type 2)

Grassland / Meadow Management



White Hill Wind Farm

7 DUNDRUM BUSINESS PARK
WINDY ARBOUR
DUBLIN D14 N2Y7
IRELAND
T: 0129 64667
www.slrconsulting.com

WHITE HILL
ELECTRICITY SUBSTATION

ENVIRONMENTAL IMPACT ASSESSMENT
HABITAT AND SPECIES MANAGEMENT

FIGURE 6

Scale
1:2,500 @ A3

Date
FEBRUARY 2025

501.065431.00001.0014.2 HS Management

